

STORM

An adaptation of Shakespeare's Tempest

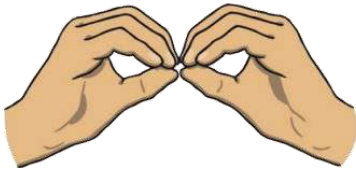
Visual Story

bamboozle

creating possibilities for disabled children

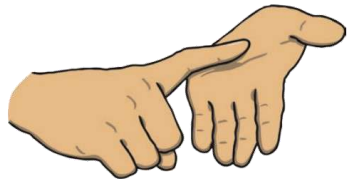


Meet the team



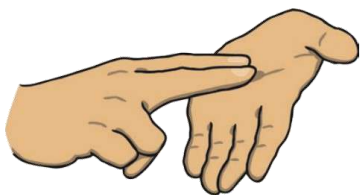
This is Ben.

**He plays the character
of Prospero in Storm.**



This is Lara.

**She plays the character
of Ariel in Storm.**



This is Naomi.

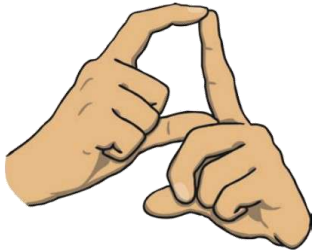
**She plays the character
of Caliban in Storm.**





This is Craig.

**Craig is a musician
and plays the guitar.**

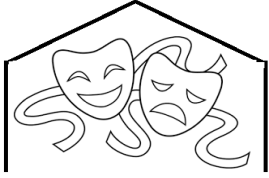


This is David.

**He helps the performers
and controls the lights
during the show**



STORM: The Story



- You are going to see a play called **Storm**.



- When you enter the performance space, you will come in to relaxing music.



- Inside the performance space, the actors will be relaxed and sitting on the set.
- The lighting will change when the show starts.
- There will be a chair for you to sit on. It is ok to sit on the chair for the whole of the play. It is also ok to get out of your chair to move around to watch parts of the play.



- If for some reason you need to leave the room you can. You can come back when you are ready.



- You will hear your name being sung in the **Welcome song**.



- You will hear the sound of waves crashing onto a shore and the noises of an island.



- You will meet the characters **Prospero** and his apprentice **Ariel**.



- Prospero is a Magician.



- Prospero and Ariel sing a song called 'Whisper a Little Magic'.



- Prospero performs his magic, but Ariel turns it into a game.
- This makes Prospero angry and he sends Ariel away.



- Ariel returns with the wild creature **Caliban**, who is asleep.
- Caliban wakes up and collects wood from the island.



- Caliban thinks the island belongs to her and **argues** with Prospero who believes the island belongs to him.



- Prospero sends Caliban off to go fishing.

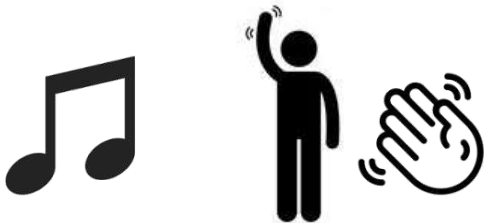


Storm

- Prospero tells Ariel to conjure up a storm and Caliban is washed up on the shore.



- Prospero and Ariel help to bring Caliban back to life.
- Caliban wakes up and the three agree to share the island.



- At the end of the play, the characters will sing a Goodbye song.



- You will hear your name again in the Goodbye song.

thank you



- When the play has finished, the characters thank everyone for watching.



- You can leave the performance space when you are ready.

Creative team:

Director: Christopher Davies

Assistant Director: Sue Pycroft

Written by: Christopher Davies & Becky Matter

Performed by:

Craig Byrne

Naomi Sparrow

Ben Moores

Lara Greenfield

Songs and original Musical Direction:

Gren Bartley

Designer: Irene Jade

Costume support: Hannah Boothman

Design Assistant: Gee Hatton

Assistant Prop Makers:

Jake Parker

Cherrie Whatmuff

Set builder: Tom Cleaver

Bamboozle Theatre Company:

Artistic Director: Christopher Davies

Director of Families and Community Sue Pycroft

Associate Director of Education: Nicole Arkless

Company Manager: Rob Holsman

Company Administrator: Jennifer Murphy

Company Administrator: Kit Fordham

Tour Co-ordinator: Jade Frost

Development Manager: Tina Smith

Original production developed with support from:



Bamboozle Theatre Company

Registered Company number: 7193792 Registered Charity number: 1136157

Unit 10, ST Mary's Works, 115 Burnmoor Street, Leicester, LE2 7JL

www.bamboozletheatre.co.uk

Tel: 0116 255 2065

Email: info@bamboozletheatre.co.uk