

bamboozle

creating possibilities for disabled children



Supported using public funding by
**ARTS COUNCIL
ENGLAND**

The River



**A PRODUCTION FOR DISABLED AUDIENCES
WITH COMPLEX NEEDS (PMLD)**

VISUAL & AUDIO GUIDE

About the show

You will be visiting a theatre to experience a show called **The River**, by Bamboozle Theatre Company.

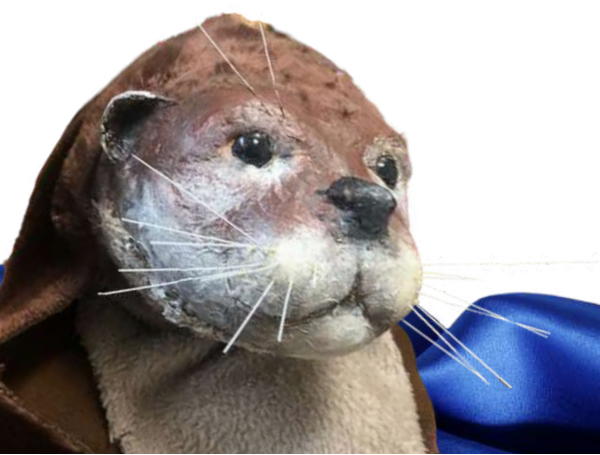
You will be joining us on a journey from the source of the river as it flows downstream towards the sea.

In the show you will meet three characters: the River Spirit, the Salmon and the Ferryman.

As we follow the river and the characters, we will also meet the wildlife who live on the riverbank and in the river itself.

We'll meet swallows and dragonflies, a playful otter, a stately heron in her nest, and perhaps we might even meet an elusive Kingfisher!

Let's introduce the Bamboozle team who will be performing the show...



My name is **Amy**.



I am a white woman in my mid thirties and am 5ft 2 in height.

I play the River Spirit

I guide the river on its way from the source to the sea.

My clothes are deep blue. I wear a long-sleeved t-shirt.

I wear a flowing long length skirt made of velvet.

I wear gloves made of silk.

I also wear a black bowler hat.



My name is **Naomi**.



I am a small mix raced woman in my early forties. I have long braided hair.

I play the Salmon

I swim in the river against the current to find my way upstream.

My clothes are light and dark red.

I wear a long sleeved dark red t-shirt and wide legged trousers.

Over these I wear a light red dress made of cotton which has a flowing skirt.

I wear shiny lace up boots which are light purple in colour.





My name is **Ben**.



I am a tall white man with medium length wavy hair, in my early forties.

I play the Ferryman.

I sit in my boat and fish for the salmon.

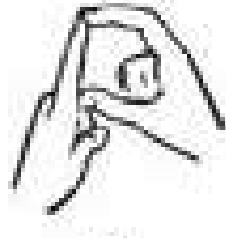
My clothes are yellow and brown in colour.

I wear a yellow long sleeved knitted cardigan, and a ochre collarless shirt.

I wear brown trousers and shiny brown boots.

I also wear a straw boater hat.

My name is **David**.



I am a white man with long dark brown hair and a long dark brown beard.

I control the recorded sounds and lights in the show.

I also help during the show by moving props and the silk fabric of the river.

I wear a blue t-shirt and dark blue trousers.

I also play the Waterphone during the show.

Some instruments in the show



An accordion



Waterphone



Djembe

Wine glass "armonica"



The River was devised by the company.'

The Team

Director: Christopher Davies

Composer & Musical Director: Craig Byrne

Designer: Nettie Scriven

Assistant Designer: Connie Burley

Theatre Design work placement students:

Faye Durkin & Alexandra Hopkin-Spratt

Puppetry.

Designer & Direction: Sue Pyecroft

Makers: Heron and Otter – Sue Pyecroft

Kingfisher – Connie Burley

Swallows and Dragonflies – Faye and Alexandra

Dance & Movement Director: Pete Shenton

Performers:

River Spirit: Amy Whittle

Ferryman: Ben Moores

Salmon: Naomi Sparrow / Ravi Sehra

Stage/Technical Manager: David Hately

Research and Development actors:

Neyire Ashworth, Rosie Fox, Alexandra Hofgartner

The Bamboozle Team

Tour Co-ordinator & show resources: Jade Frost

Teachers' Companion Pack: Dawn Bowden

Project Manager: Jennifer Murphy

Company Administrator: Kit Fordham

General Manager: Rob Holsman

Relationship Development Co-ordinator: Tina Smith

Education Development Co-ordinator: Nicole Arkless

Director: Family & Community: Sue Pyecroft

Artistic Director: Christopher Davies

